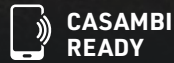
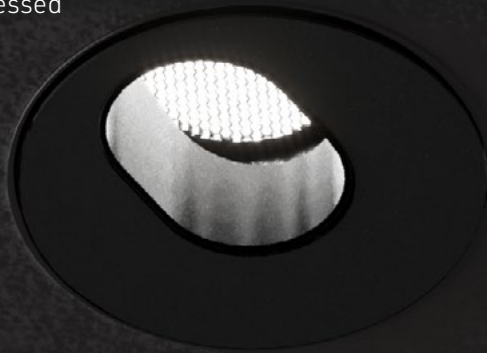
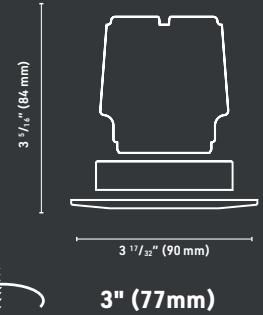


OMEGA PRO

Downlight recessed



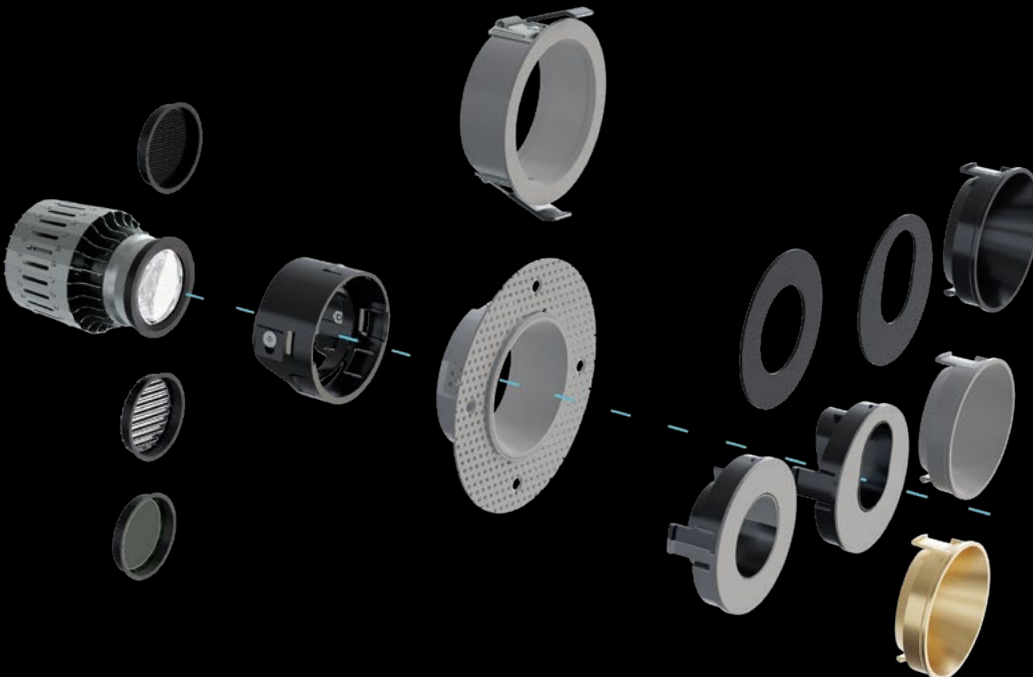
Cross-section dimensions:

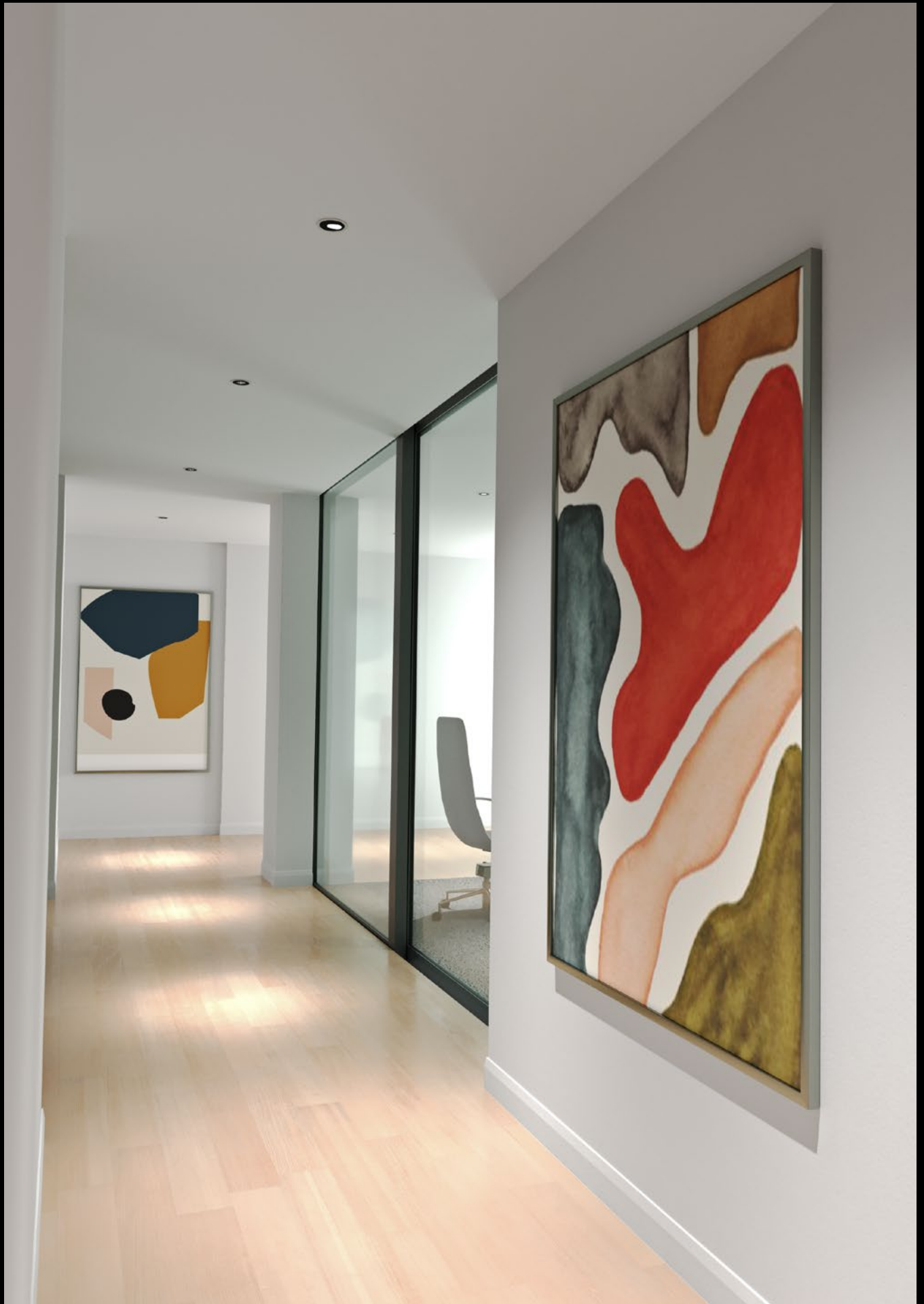


Discretion doesn't have to mean anonymity. Omega Pro combines style with power. Its vast collection of options allows it to fully integrate with the architecture and offers full control of the lighting effects. Combined with the Casambi™ system, each light output can be controlled separately. A solution adapted to the needs of modern architecture.

FEATURES

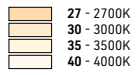
- Anti-glare reflector design $UGR \leq 19$
- Available in 6 W (IC rated) and 8 W.
- Reproduces the crisp white light of an MR16 halogen lamp
- 50 000 hours
- High CRI of 90
- Discreet look and sleek design
- Dimmable with ELV dimming 120V AC or 0/10V dimming 120/277 VAC.







TRIM	FILTER	REFLECTOR	ACCESSORIES	QUANTITY
 TR - Trimless round	 FG - Frosted glass	 WRW - Wide reflector white	 PF - Plaster frame, #3"-5.5" new construction	OMEGA PRO
 FRT - Fixed round trim	 ST - Striped glass	 WRB - Wide reflector black		
	 DG - Diffuser glass	 WRG - Wide reflector gold	 IC - IC Box**, #3"-5.5" new construction **Use only with 900 lm	
	 HC - Honeycomb	 NRW - Narrow reflector and oval ring white		
		 NRWB - Narrow reflector and oval ring Black	 NO - No mounting accessories	
		 NRRW - Narrow reflector and round ring white		
		 NRRB - Narrow reflector and round ring black		
TRIM	FILTER	REFLECTOR	ACCESSORIES	QUANTITY

COLOR TEMPERATURE	LUMINOSITY	POWER SUPPLY	NOTES
 <ul style="list-style-type: none"> 27 - 2700K 30 - 3000K 35 - 3500K 40 - 4000K 	<ul style="list-style-type: none"> 670 - 670 lm (6W)¹ CRI 90+ 900 - 900 lm (8W)² CRI 90+ 	<p>Included</p> <ul style="list-style-type: none"> B - ELV dimming 120V AC D - 0/10V dimming 120/277 VAC 	<ul style="list-style-type: none"> 1 Only with the ELV dimming 120V AC power supply. 2 900 lm is not IC rated. May need insulated box (see accessories).

COLOR TEMPERATURE LUMINOSITY POWER SUPPLY

Recessed