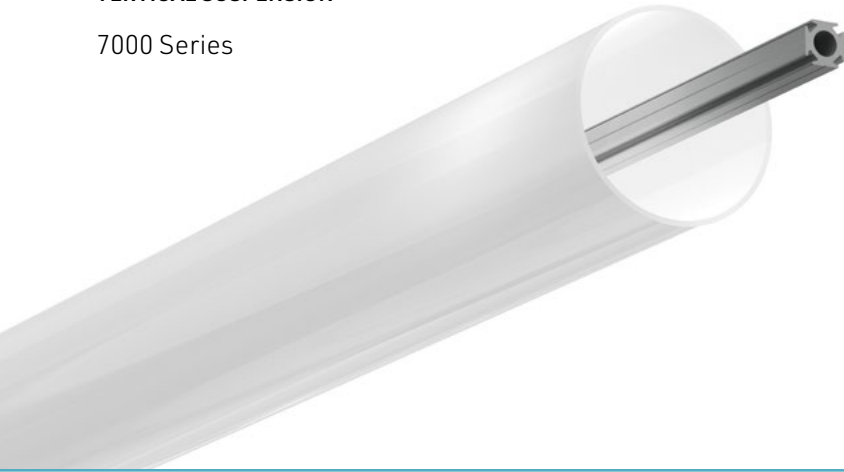


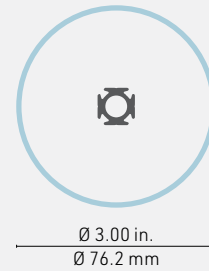
7650 PROFILE (TUBE)

VERTICAL SUSPENSION

7000 Series



Cross-section dimensions:



THE MAGIC OF 360 ° LIGHTING

Modern design, this beautiful opal acrylic tube multiplies the possibilities of lighting. Its innovative four-sided radiator diffuses 360 ° light and can accommodate 4 light sources. The wide choice of color temperatures and light intensities make it an ultra-versatile luminaire when it comes to determining the intensity and color of the light. With a 3-inch diameter, the 7650 provides uniform linear illumination without dots or halos.

FEATURES

- Hanging installation vertically
- Custom length by sections of 6 to 144 inches (3.6m).
- Accepts 4 led engines on the heatsink insert: up to 10mm wide.
- Made of ALCOA 6063-T5 aluminum alloy increasing heat dissipation.
- Designed to give a uniform 360° light without hot spots.
- Designed to meet North American woodworking standards.

OPTIONS



LED ENGINE COMPATIBILITY

All four surfaces of the heatsink are compatible with LED engines up to **10mm** wide for IP22 and up to **8mm** wide for IP68 options.

LINEAR WEIGHT

0.529 lbs/ft, 0.787 kg/m (acrylic tube with aluminum heatsink insert only)



ACRYLIC DIFFUSER



7650 - Acrylic diffuser tube

HEATSINK INSERT



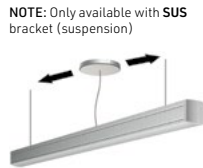
7604 - 4-Side heatsink

MOUNTING HARDWARE



SUSV - Vert. susp. kit, Chrome w/15ft. aircraft cable & coax wire

CANOPY



NOTE: Only available with SUS bracket (suspension)

Remote driver canopy plate
See Appendix 2 on page 158
CR0 - Alu
CR1 - Black
CR2 - White

LENGTH

Custom length by sections of 6 to 60 inches.

NOTE: When using our high voltage LED engine (4LHP), the maximum length is 48 inches.

7650
ACRYLIC DIFFUSER

7604
HEATSINK INSERT

SUSV
MOUNTING HARDWARE

CANOPY

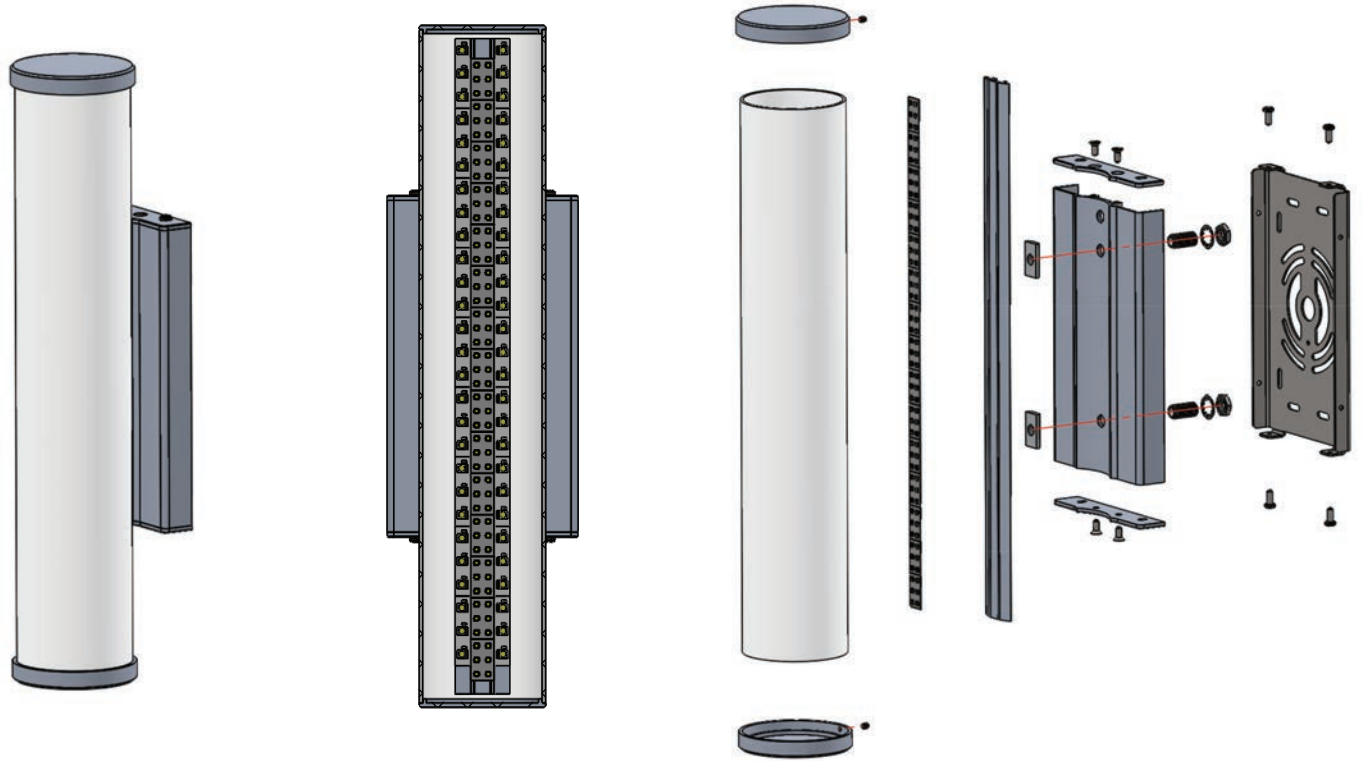
LENGTH

7000

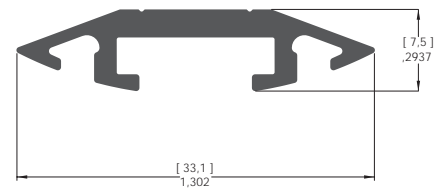
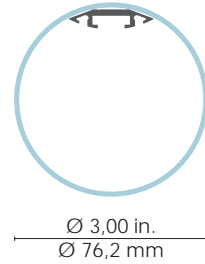
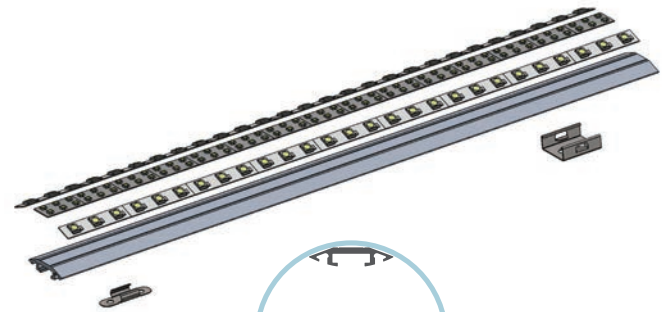
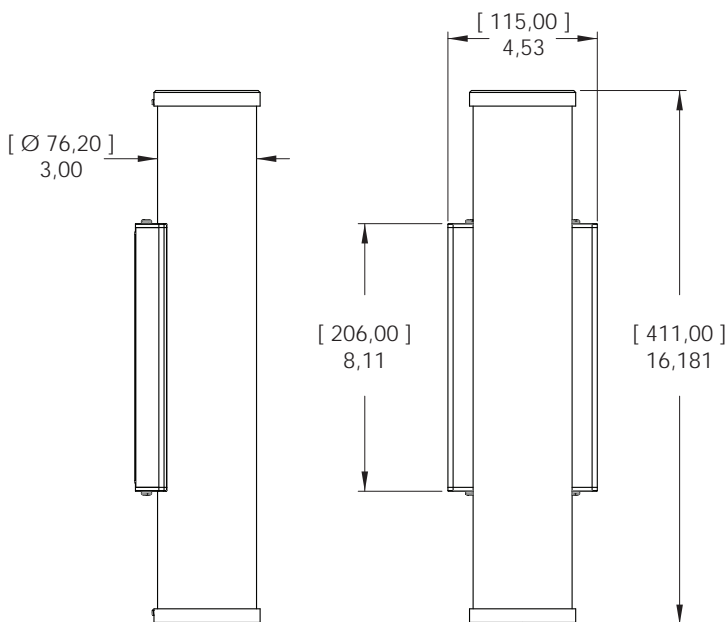
COLOR TEMPERATURE	LUMEN PACKAGE*	POWER CABLE FINISH	USAGE*	POWER SUPPLY/CONTROL	*NOTES
<ul style="list-style-type: none"> 24 - 2400K 27 - 2700K 30 - 3000K 35 - 3500K 42 - 4200K 53 - 5300K (LHP only) 62 - 6200K (LP only) WD1 - WarmDim 14W TW1 - Tunable White 11W TW2 - Tunable White 19W RGB1 - RGB 14W RGB2 - RGB 19W 	<ul style="list-style-type: none"> 4LP0 - 512 LM / 6.0W FT / 90+CRI 4LP1 - 640 LM / 6.0W FT / 90+CRI 4LP2 - 1020 LM / 12.0W FT / 90+CRI 4LP3 - 1232 LM / 18.0W FT / 90+CRI 4LP4 - 1600 LM / 23.2W FT / 90+CRI 4LHP - 2800 LM / 28.0W FT / 95+CRI <p>Note: Not applicable for Warmdim Tunable White & RGB color temperatures</p>	<ul style="list-style-type: none"> BK - Black WH - White RD - Red BC - Black/White Chevron 	<ul style="list-style-type: none"> I - IP22 indoor dry location 0 - IP68 wet/damp location <p>Note: 3LHP, Warmdim, Tunable White, RGB options are only available in IP22.</p>	<ul style="list-style-type: none"> A - Non-dimming B - ELV dimming 120V AC C - ELV dimming 120/277 VAC** D - 0/10V dimming 120/277 VAC E - Non-dimming DC plug in F - DMX G - Lutron - HI-LUME PREMIER 0,1% Eco System 24V/96W I - Casambi CBU-A2D-0/10V-DALI-Bluetooth 100/277 VAC J - Casambi CBU-PWM4-4CH-Bluetooth 100/277 VAC K - Casambi CBU-TED-CV-Trail edge dim-Bluetooth 120 VAC NO - No driver 	<p>*The light output is provided in lumens per foot, for a CCT of 4200K and a clear lens. Please refer to the optics page for CCT and translucency conversion factors.</p> <p>** Only available in 96W - 24V Driver</p> <div style="border: 1px solid black; padding: 5px; width: fit-content;"> <p>TITLE 24 PAGE</p> </div>

COLOR TEMPERATURE CCT LUMEN PACKAGE POWER CABLE FINISH USAGE POWER SUPPLY/CONTROL

Serie 7650 (7630) LM22840-21



ASSEMBLY DIMENSION / DIMENSION D'ASSEMBLAGE



[mm]
 inches/pouces

NOTES

