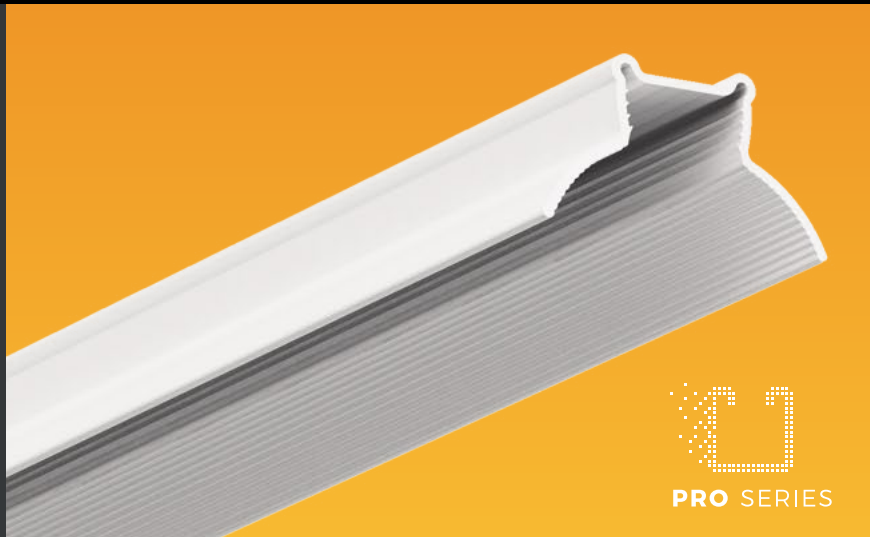


HIGH EFFICIENCY
REFLECTOR V2.0

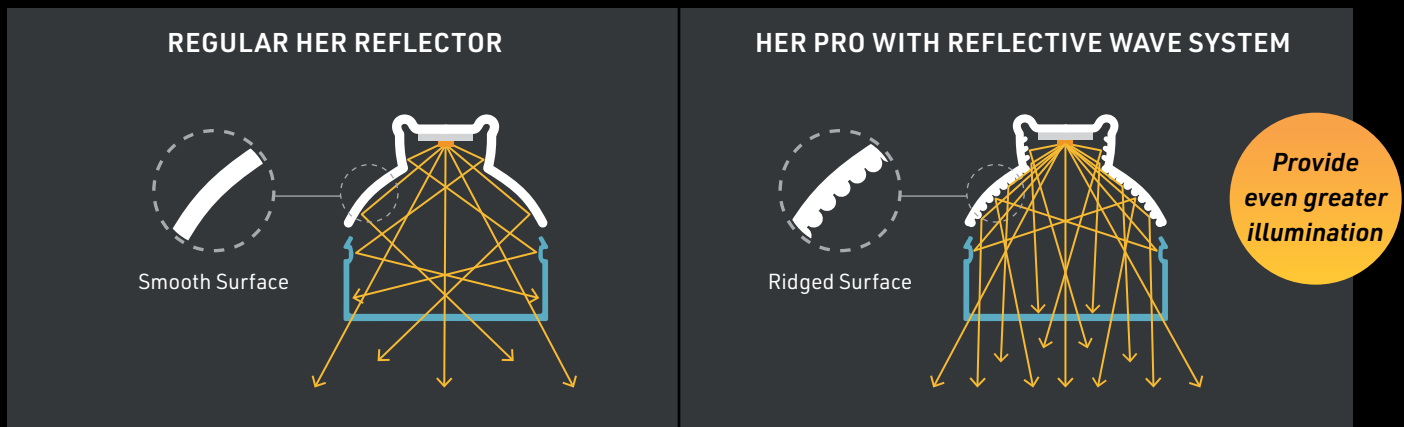
HER PRO

Significantly improves
luminous efficiency!



HER PRO - HIGH EFFICIENCY REFLECTOR V2.0

Achieve maximum luminous flux with the **HER Pro** (High Efficiency Reflector)! With its engineered design, this new reflector significantly improves luminous efficiency and provides lighting without loss of light. An ingenious idea that surpasses the use of white reflective paint to maximize lighting. The Pro version has been designed with our brand new *Reflective Wave System* – ridges on each side of the reflector – that helps provide even greater illumination!



A PERFECT FIT TO OUR LUXLINE 120 V LED ENGINE

The LuxLine 120 V light source fits perfectly at the base of the reflector: forget about 3M foam tape or clips to hold it in place: it fits like a glove! The HER Pro reflector is suitable for all **8000 series** aluminum profiles.

NEW! FULL EDGE PURE LIGHT PRIME LENS

This new Prime lens with a deep "U" shape design provide edge to edge light with no dark edges. Another great LumenTruss exclusive!

