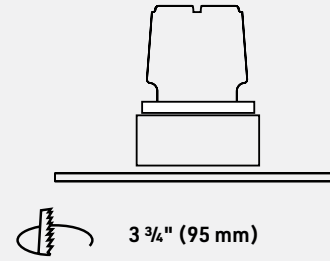


OMEGA

4" Recessed Downlight



Cross-section dimensions:



Shown: Trimless model (See page 134 for other models).



The quality of light of this Series is comparable to that of a halogen lamp offering crisp, directional light which perfectly highlights surroundings. It offers a CRI of 90 and glare-control reflector design.

This small LED module provides higher lumen performance than an LED lamp and is very easy to install. Without the need of a housing, it is installed directly in the ceiling using torsion springs and most models are IC rated. The LED module is fitted with an external dimmable driver. Omega is also offering style, discretion and flexibility with a wide selection of interchangeable trims and accessories.

FEATURES

- Anti-glare reflector design UGR \leq 19
- Available in 6 W (IC rated) with three different beam angle options: 22°, 36° and 60°
- Reproduces the crisp white light of an MR16 halogen lamp
- 50 000 hours
- High CRI of 90
- Discreet look and sleek design
- Dimmable
- Designed to meet North American woodworking standards.



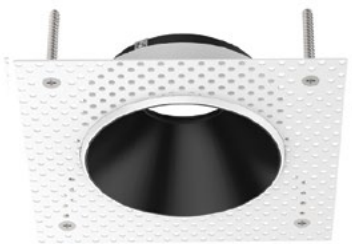


OMEGA TRIMLESS KIT - MODERN & STUNNING

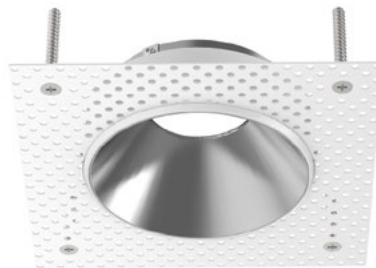
AN INSTANT CLASSIC

The Omega trimless kit is our new favorite LED Recessed luminaire! Minimalist with the newest in technology. The kit is available in silver, white or black. One of the advantages is that it is designed to be plastered into ceilings to give a seamless appearance. A great choice to get a clean and modern look.

Recessed



Kit Trimless Black



Kit Trimless Silver



Kit Trimless White



OMEGA MODULES AND TRIMS DIMENSIONS

QUALITY CONSTRUCTION

The Omega Series is designed and manufactured using high quality materials.

EASE OF INSTALLATION

This LED downlight is easy to install with no need for a housing and it comes equipped with torsion springs.

VERSATILITY

With interchangeable trims and reflectors, this product can be adapted to all types of designs and applications.

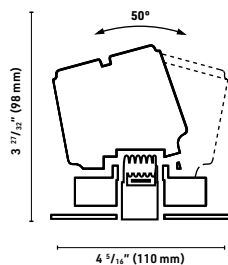
PLEASING LIGHT

The Omega Series reproduces the crisp white look of a halogen MR16 lamp at a fraction of the energy cost

SUPERIOR PERFORMANCE

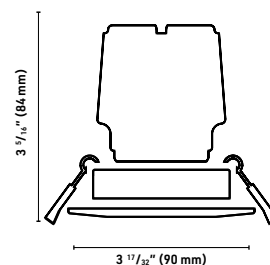
The Omega Series produces more light output than a regular LED MR16 or GU10 lamp.

RA2 - SA2



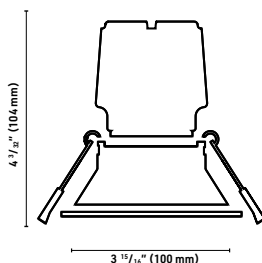
3 3/4" (95 mm)

RS2



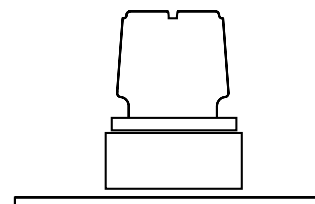
3" (76.5 mm)

RR2



3 1/2" (89 mm)




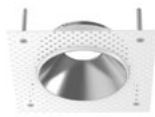







KT0 - KT1 - KT2



3 3/4" (95 mm)

Omega ordering sheet

Recessed downlight

COLOR TEMPERATURE	LUMINOSITY	BEAM ANGLE	TRIM	POWER SUPPLY / CONTROL	QUANTITY
27 - 2700K  (in stock)	670 - 670 lm, CRI 90+ 	22 - 22 degrees 	 KT0 - Kit trimless silver  3 3/4" (95mm)	*Included B - ELV dimming 120V AC D - 0/10V dimming 120/277V AC	 OMEGA 6W
30 - 3000K  (in stock)		36 - 36 degrees 			
35 - 3500K  (in stock)		60 - 60 degrees 			
40 - 4000K  (special order)*	*900 lm is not IC rated. May need insulated box (see accessories).				

*Delivery times will be longer for special orders.

- 
KT1 - Kit trimless black
 **3 3/4" (95mm)**
- 
KT2 - Kit trimless white
 **3 3/4" (95mm)**
- 
RA2 - Round adjustable, White
 **3 3/4" (95mm)**
- 
SA2 - Square adjustable, White
 **3 3/4" (95mm)**
- 
RR2 - Round recessed, White
 **3 1/2" (89mm)**
- 
RS2 - Round shower, White
 **3" (76.5mm)**

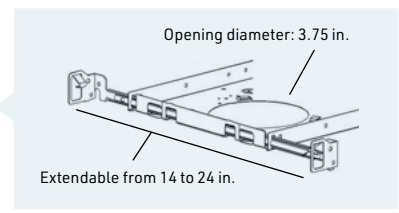
	670				
COLOR TEMPERATURE	LUMINOSITY	BEAM ANGLE	TRIM	POWER SUPPLY/CONTROL	QUANTITY

ACCESSORIES



New construction mounting plate

QUANTITY



ACCESSORIES



Insulated box with hanger bars*
*Use only with 900 lm

QUANTITY

Opening diameter:
3 & 4.5 in.