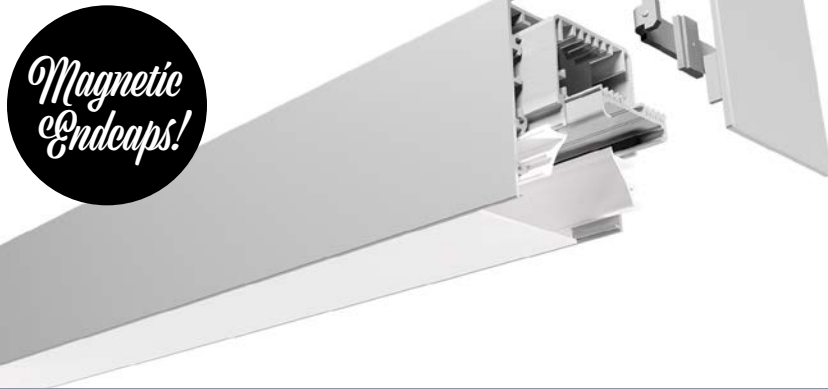
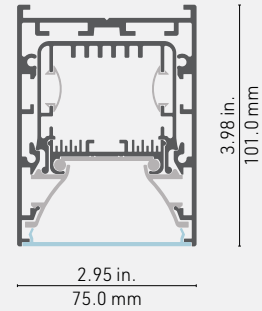


STUD DOWN

Luminaire Series



Cross-section dimensions:



Offered in two popular lengths, the STUD is a linear luminaire system designed to be suspended. It is robust and powerful. With a CRI of 92+, UL-certified LED light sources provide exceptional quality linear illumination in a high-power version. It is equipped with an Optiflex lens that diffuses the light evenly, without dots, in a beam of 180 degrees with a built in integrated 0-10V dimming driver. A tool-free, exclusive assembly eliminates hardware clutter for a clean look. Ideal for offices and commercial spaces.

FEATURES

- Dimensions: 3" wide, 4" high, and 48" or 96" long.
- Available in 4 lumen packages: S1-375 lm/ft, S2-500 lm/ft, S3-750 lm/ft and S4-1000 lm/ft.
- Made of ALCOA 6063-T5 aluminum alloy for superior heat dissipation and LED longevity.
- The Optiflex (frosted) lens, combined with the distance from the LED source to the lens, allows for a dot-free light appearance.
- Choice of 3 color temperatures: 3000K, 3500K and 4000K.
- Transformer integrated.
- Tool-free mounting kit with rubber tabs and magnetic bits, exclusive to LumenTruss™
- The suspension cables can be slid anywhere on the top of the luminaire for greater flexibility of installation

OPTIONS



LED ENGINE COMPATIBILITY

STUD is designed for use with proprietary rigid 1.5in wide LED PCBs.

LINEAR WEIGHT

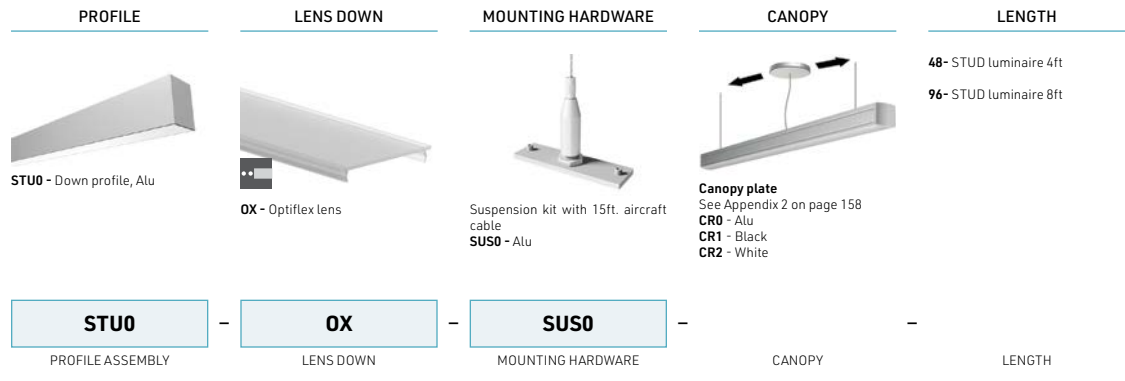
2.863 lbs/ft, 4.261 kg/m

Figures provided for the aluminum profiles only – outer and inner enclosures, heatsink. The complete assembly, with LED light sources, reflectors, power supplies, endcaps, mounting hardware etc. will be greater, and will vary depending on product configuration.

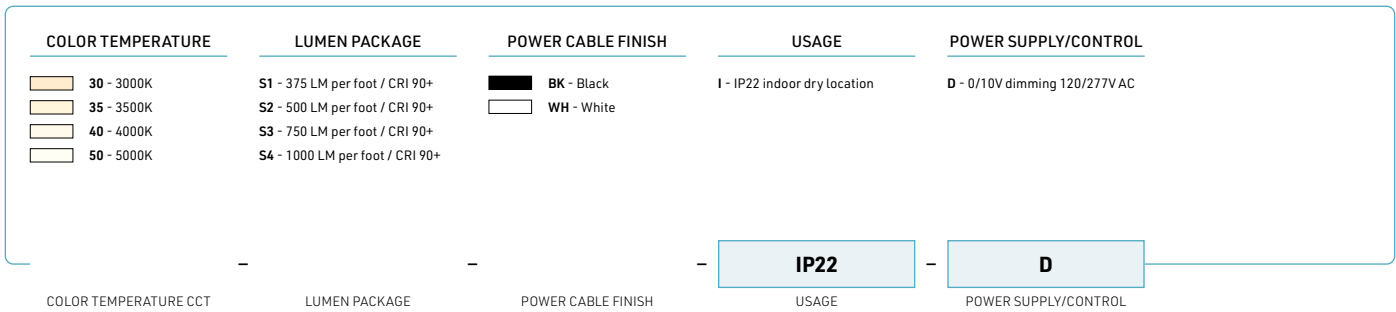


STUD down ordering sheet

Luminaire Series



Luminaire



NOTES

